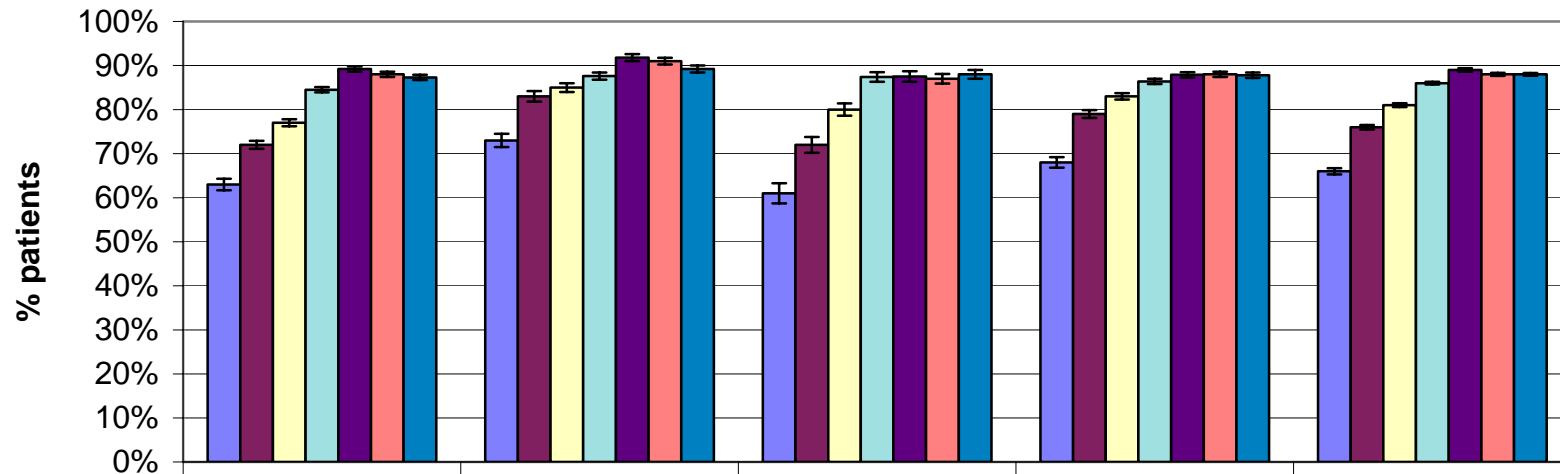


**Percentage of HD Patients with URR \geq 65%
by State and Network 9/10 for Selected Collection Periods**



	IL	IN	KY	OH	Net 9/10
4Q96	63%	73%	61%	68%	66%
4Q98	72%	83%	72%	79%	76%
4Q00	77%	85%	80%	83%	81%
4Q02	85%	88%	87%	86%	86%
4Q04	89%	92%	88%	88%	89%
4Q05	88%	91%	87%	88%	88%
4Q06	87%	89%	88%	88%	88%