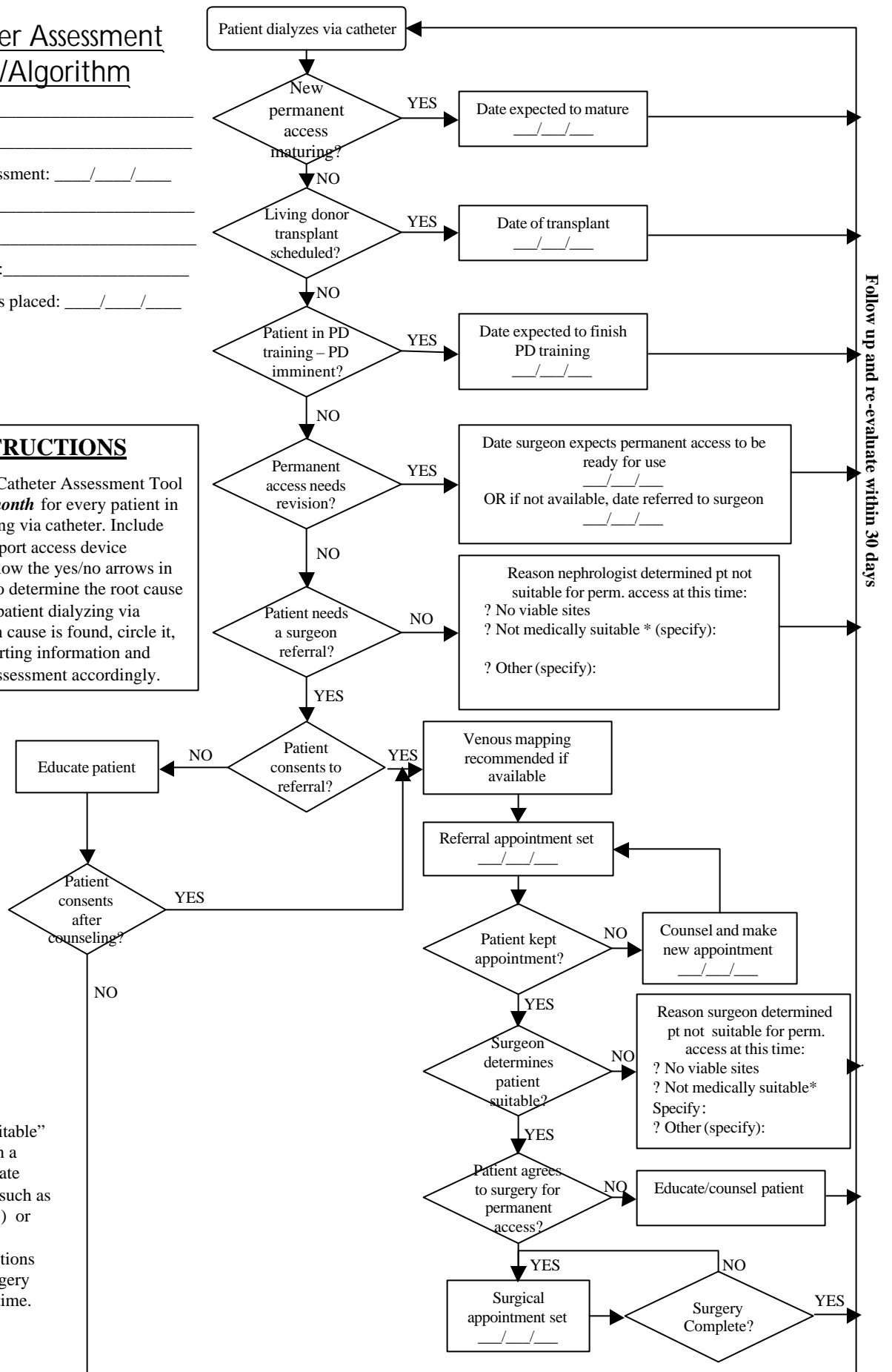


# Catheter Assessment Tool/Algorithm

Patient Name: \_\_\_\_\_  
 SSN/ID: \_\_\_\_\_  
 Date of this assessment: \_\_\_/\_\_\_/\_\_\_  
 Completed by: \_\_\_\_\_  
 Provider name: \_\_\_\_\_  
 Provider number: \_\_\_\_\_  
 Date catheter was placed: \_\_\_/\_\_\_/\_\_\_

**INSTRUCTIONS**  
 Complete this Catheter Assessment Tool *at least every month* for every patient in the unit dialyzing via catheter. Include patients with a port access device (LifeSite). Follow the yes/no arrows in the algorithm to determine the root cause leading to this patient dialyzing via catheter. When cause is found, circle it, enter the supporting information and plan the next assessment accordingly.

\* "Medically unsuitable" includes patients in a terminal disease state (other than ESRD such as Cancer, AIDS, etc.) or with co-morbid conditions or infections making access surgery impossible at this time.



Follow up and re-evaluate within 30 days